



**EVERGREEN**  
ENTERPRISES

# GREEN BUILDING SOLUTIONS

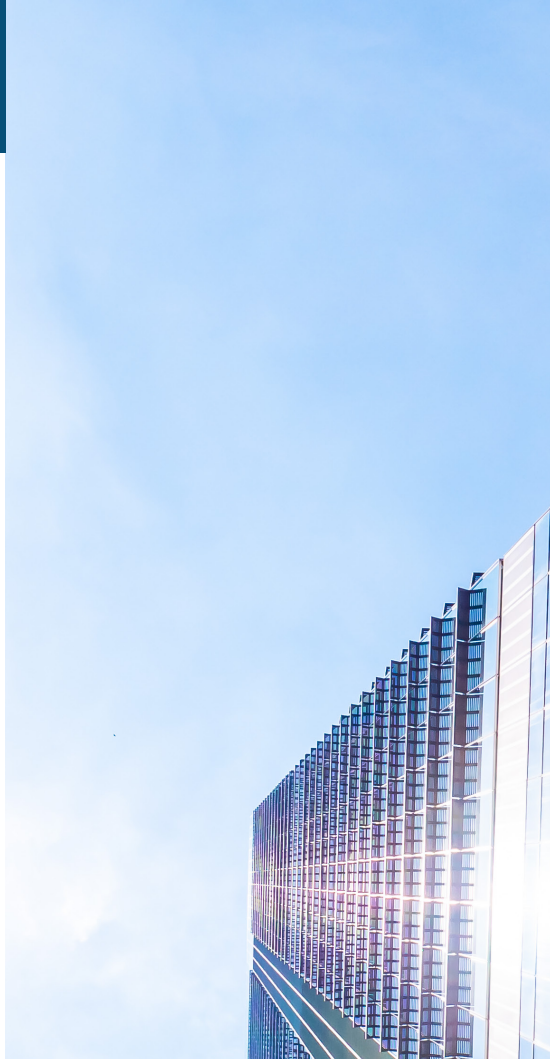
with futuristic technology



## *Your Trusted Partner in Sustainable Building Solutions*

Welcome to Evergreen Enterprises, an ISO 9001:2015 & ISO 9001:2018 certified company and a leader in the Indian construction sector with over 18 years of experience. We specialize in innovative building solutions using environmentally - centered materials. Founded by civil engineer Mr. Swapnil Kudale and located in Pune & Nashik, Evergreen Enterprises makes products of the highest quality.

Our unwavering dedication is towards delivering cost-effective, durable solutions that respect the environment. With focusing on quality, safety and customer satisfaction, let's build remarkable structures for a sustainable future together.



# 25+

Export Quality  
Products

# 18+

Years of  
Experience

# 7+

States  
Presence



Premium Quality



Cost-Effective Solutions



On-Time Delivery







## **01. AAC Block Adhesives**

SuperJoint  
Super Eco Joint  
Smart Fix  
Super Strong Bond  
Evergreen AAC Blocks

## **02. Ready Mix Plaster**

Everplast  
Everplast W

## **03. Tiling Solutions**

Tile Fixer Master  
Tile Fixer Ultra  
Tile Fixer Super 999  
Tile Fixer Expert 325  
Tile Fixer Pro 335

## **04. Waterproofing Solutions**

Super Bondcrete  
Super Bond SBR 500  
Super Flexibond  
Rubberflex green

Super Patch  
Ever Plast-O-Bond

## **05. Structural Grouts**

Everpower Grout 60  
Everpower Grout 80  
Everpower Grout 80+

## **06. Flooring Solutions**

Strong hardtop NM  
Strong hardtop M

Super Gypbond



# **AAC BLOCK ADHESIVES**







# AAC Block Adhesive

## SuperJoint - AAC Block Adhesive

SuperJoint, is thin bed high strength, pre mixed, quality assured mortar comprising of ordinary portland cement, specially graded sand and polymers. It is specially formulated and easily applied giving a better bonding with AAC Blocks, hollow blocks, flyash bricks.



### Area Of Application:

To join AAC block, flyash bricks, cement block, hollow blocks, chira stones etc.

#### PKG.

40 Kg

#### Coverage / Kg:

3-5 sqft. For block thickness of 100mm

NOTE:- Super Joint bond complies ASTM 1660-09

### Features & Benefits:

- Pre-mixed ready to use, only need to add water at site
- High water retention capability
- High bonding strength due to polymer modification of mortar
- Self-curing
- Thin bed joints
- No shrinkage cracks at joints



## Super Eco Joint - AAC Block Adhesive

Super Eco Joint, is thin bed high strength, pre mixed, quality assured mortar comprising of ordinary portland cement, specially graded sand and polymers. It is specially formulated and easily applied giving a better bonding with AAC Blocks, hollow blocks, flyash bricks.

### Area Of Application:

To join AAC block, flyash bricks, cement block, hollow blocks etc.

#### Features & Benefits

- Pre-mixed ready to use, only need to add water at site
- High water retention capability
- High bonding strength due to polymer modification of mortar
- Self-curing
- Thin bed joints
- No shrinkage cracks at joints



PKG.  
40 Kg

Coverage / Kg:  
3-5 sqft. For block thickness of 100mm

## Smart Fix - AAC Block Adhesive

Smart Fix, is thin bed high strength, pre mixed, quality assured mortar comprising of ordinary portland cement, specially graded sand and polymers. It is specially formulated and easily applied giving a better bonding with AAC Blocks, hollow blocks, flyash bricks.

### Area Of Application:

To join AAC block, flyash bricks, cement block, hollow blocks etc.



#### Features & Benefits

- Pre-mixed ready to use, only need to add water at site
- High water retention capability
- High bonding strength due to polymer modification of mortar
- Self-curing
- Thin bed joints
- No shrinkage cracks at joints

PKG.  
40 Kg

Coverage / Kg:  
3-5 sqft. For block thickness of 100mm





## Super Strong Bond - AAC Block Adhesive

Super Strong Bond, is thin bed high strength, pre mixed, quality assured mortar comprising of ordinary portland cement, specially graded sand and polymers. It is specially formulated and easily applied giving a better bonding with AAC Blocks, hollow blocks, flyash bricks.



### Area Of Application:

To join AAC block, flyash bricks, cement block, hollow blocks etc.

#### PKG.

30 Kg

#### Coverage / Kg:

3-5 sqft. For block thickness of 100mm

### Features & Benefits:

- Pre-mixed ready to use, only need to add water at site
- High water retention capability
- High bonding strength due to polymer modification of mortar
- Self-curing
- Thin bed joints
- No shrinkage cracks at joints



# Evergreen AAC Blocks

Evergreen Autoclaved Aerated Concrete (AAC) Blocks are made out of flyash, cement, lime, gypsum, aluminium powder & water. These blocks are environment friendly. These blocks save your time and give higher strength to your construction. This is a No.1 green building product which contains more than 75% of flyash. Evergreen AAC Blocks are grade 1 and ISI mark blocks.

No.	Particulars	Unit	Values
1.	Size	mm	600 x 200 / 600 x 240
2.	Thickness	mm	75, 100, 125, 150, 200, 225, 250, 300
3.	Size Tolerance	mm	+2
4.	Compressive Strengths	N/mm <sup>2</sup>	>3
5.	Over Dry Density	kg/m <sup>3</sup>	550 - 650
6.	Fire Resistance	Hrs.	4 (For 200mm thick wall)

Size In Inches	Actual Size (mm)	No. of Blocks in per Cubic Meter
24" x 8" x 4"	600 x 200 x 100	83.33
24" x 8" x 5"	600 x 200 x 125	66.66
24" x 8" x 6"	600 x 200 x 150	55.55
24" x 8" x 8"	600 x 200 x 200	41.66
4" x 8" x 9"	600 x 200 x 225	37



Time  
Saving



Fire  
Resistant



Stronger



Water  
Barrier



Light  
Weight



Sound  
Barrier



Cost  
Saving



Pest  
Resistant





# READY MIX PLASTER





# Ready Mix plaster

## Everplast - River Sand Ready Mix Plaster

Everplast is a cementitious ready mix plaster used for plastering work in a clean & speedy manner. Due to its high content in additive, it allows better shrinkage control as well as improved workability. It is also used in waterproofing work.



### Area Of Application:

Everplast is recommended for external & internal plastering on AAC blocks, Flyash Bricks, Ceiling, and Concrete Surface. Highly recommended for well-prepared walls requiring thickness of plaster upto 20 mm in single layer.

### Features & Benefits

- Well graded silt-free sand
- Lesser rebound loss than conventional plaster
- Replacement to conventional plaster
- Lesser curing than conventional plaster
- Fiber-reinforced
- Clean & speedy work
- Minimal wastage

PKG.  
40 Kg

### Coverage / 40 Kg:

18-20 sqft @10-12 mm thickness (Depending on the substrate)

## Everplast W - Wash Sand Ready Mix Plaster

Everplast W is a cementitious ready mix plaster used for plastering work in a clean & speedy manner. Due to its high content in additive, it allows better shrinkage control as well as improved workability.

### Area Of Application:

EverPlast W is recommended for external & internal plastering on AAC blocks, Flyash Bricks, Ceiling, and Concrete Surface. Highly recommended for well-prepared walls, requiring thickness of plaster upto 15 mm in a single layer.

### Features & Benefits

- Well graded silt-free sand
- Lesser rebound loss than conventional plaster
- Replacement to conventional plaster
- Lesser curing than conventional plaster
- Fiber-reinforced
- Clean & speedy work
- Minimal wastage



PKG.  
40 Kg

### Coverage / 40 Kg:

14-16 sqft @10-12 mm thickness (Depending on the substrate)





**TILE FIXER  
SOLUTIONS**

# Tiling Solutions

## Tile Fixer Master

### Polymer Modified Tile Adhesive - C1T / T1 T

Tile Fixer Master is a polymer modified thinnest tile adhesive for fixing ceramic tiles, in internal areas. It is suitable for both vertical and horizontal application, over the cementitious substrate. It is supplied as a drymix mortar, to which water needs to be added before application.



#### Area Of Application:

It is recommended for ceramic tile floors, wall and internal application. It is used for tile-on-application.

#### Features & Benefits

- Ready to mix, just need to add water
- Self-curing
- Excellent adhesion and no shrinkage
- Extended open time

**PKG.** 20 Kg BOPP bag  
Available in Grey

**Coverage / 20 Kg:**  
70-80 sq.ft @3mm

## Tile Fixer Ultra

### Polymer Modified Tile Adhesive for Ceramic & Vitrified Tiles - C1TE / Type 2T

Tile Fixer Ultra is polymer modified cement-based construction adhesive that needs to be mixed for the installation of ceramic tile & vitrified tiles on walls internal and external floors. This is also suitable for tile-on-tile applications.

#### Area Of Application:

Tile Fixer Ultra is ideal for internal thin bed wall & floor application of ceramic & vitrified tiles. It is recommended to be used over concrete, cement, plaster & block substrate and for tile-on-tile applications.

#### Features & Benefits

- High bonding strength.
- Single component, just add water.
- For installation of vitrified tiles on wall & floor.
- Useful for bed thickness of 15mm.
- No curing and hacking required on substrate.
- Complies with ISO C1TE
- Exceeds IS 15477:2019 Type 2 Adhesive



**PKG.** 20 Kg BOPP bag  
Available in Grey & White

**Coverage / 20 Kg:**  
70-80 sq.ft @3mm



## Tile Fixer Super 999

### Adhesive for Fixing Ceramic, Vitrified & Stone Tiles For Floor & Wall Application - C2TE / Type 2T

Tile Fixer Super 999 is highly polymer-based adhesive for fixing ceramic tiles, vitrified tiles and stones on interior floor wall and external floor.



#### Features & Benefits

- High bond strength
- Useful for bed thickness of 3 to 15 mm
- No curing and hacking required on substrates
- For installation of vitrified tiles on wall and floor & Natural stone on floor
- Suitable for internal and exterior use
- Complies to ISO C2TE standards
- Exceeds IS 15477:2019-Type 2 Adhesive standards

#### Recommended Substrate

Cement plaster | Concrete | Tile on Tile Application  
Brick & block masonry | Cement screed | External top terrace

PKG. 20 Kg BOPP bag  
Available in Grey & White

Coverage / 20 Kg:  
70-80 sq.ft @3mm

## Tile Fixer Expert 325

### Adhesive for Fixing Ceramic, Vitrified & Natural Stone for Interior, Exterior & Wall C2TE / Type 3T

Tile Fixer Expert 325 is a highly polymer modified tile adhesive specially formulated for the installation of large format vitrified, porcelain, marble, granite & natural stone with low water absorption rate for both vertical and horizontal application on internal as well as external use. It is recommended to be used over cementitious substrate and for tile-on-tile applications.

#### Area of Application

It is ideal for interior & exterior floor & wall installation of all types of ceramic tile, vitrified tile, glass mosaic tile, natural stones over concrete & granite on a variety of substrate.

#### Features & Benefits

- Excellent adhesion to various substrate
- Single Component, just add water
- High-strength, polymer-modified
- Can be used upto a max. 15 mm bed thickness
- High slip resistance
- Enhance durability
- Extended open time & self curing
- Complies with EN/ISO with a C2TE Classification
- Exceeds IS 15477:2019-Type 3T



PKG. 20 Kg BOPP bag  
Available in Grey & White

Coverage / 20 Kg:  
70-80 sq.ft @3mm



## Tile Fixer Pro 335

### Multipurpose Flexible High Polymer Adhesive For Fixing Large Format Tiles & Stones For Interior & Exterior Floor & Wall - C2TES1 / Type 4TS1

Tile Fixer Pro 335 is flexible high polymer modified thin-set adhesive for fixing large format tiles, stone, granite with a low water absorption rate for both vertical and horizontal application on internal substrates as well as external use. It is recommended to be used over cementitious substrate and for tile-on-tile applications.



#### Area Of Application:

Tile Fixer Pro 335 is ideal for interior & exterior floor & wall installation of all types of ceramic tile, vitrified tile, glass mosaic tile, natural stones over concrete & granite on a variety of substrate.

**PKG.** 20 Kg BOPP bag  
Available in Grey & White

**Coverage / 20 Kg:**  
70-80 sq.ft @3mm

#### Features & Benefits:

- Single Component, just add water
- Excellent adhesion to various substrate
- High strength, polymer modified
- Can be used up to max. 15mm bed thickness
- High slip resistance
- Enhance durability
- Extended open time
- Self Curing
- Complies with EN/ISO with a C2TES1 Classification
- Exceeds IS 15477:2019-Type 4TS1



# **WATERPROOFING SOLUTIONS**





## Super Bondcrete

Super Bondcrete is an acrylic emulsion formulated to be mixed with cement on site or simply brush applied over concrete or masonry surfaces to provide an effective waterproof membrane and thus improves the tensile and flexural strength properties of mortar.



**PKG.** | **Solid Content**  
20 Kg | 40-45 %

### Coverage / Kg:

1 kg of Bondcrete Super when mixed with 1.5 to 2kg cement will give coverage 2 sq.mt for 2 coats

### Area Of Application:

- Sunken portions of toilets & bathroom, chajjas, masonry surfaces, kitchen, sewers, residential water tanks etc
- Roofs, chajjas, terraces and balconies
- For waterproofing damp walls & Repair wall

### Features & Benefits

- Multipurpose liquid, easy to use
- Breathable, allows trapped vapour to escape
- Improves flexural strength
- Reduces cracking through increased mortar flexural strength
- Bonds strongly to concrete, masonry, plasters, cementitious surfaces
- Excellent impermeability & durability in cement mortar
- Useful as waterproof coat
- Is not effected by UV light

## Super Bond SBR 500

Super Bond SBR 500 is a milky-white, Styrene Butadiene Rubber emulsion, produced from styrene and butadiene. It is specially designed for use as a bonding agent in liquid consistency. It is used for repair of spalled concrete - floors, columns, beams, chhajjas, slabs etc. Waterproofing of toilet, bathrooms & small terraces etc. It bonds strongly to old concrete, new concrete & plaster. It reduces shrinkage, prevents cracking & improves abrasion resistance.

### Area Of Application:

- For concrete repairs: Spalled concrete of floors, columns, beams, chajja, slabs, parapets, etc
- Bond Coat: For bonding new concrete to old concrete, plaster, stone/brick masonry
- Waterproofing: Basements side walls, rafts, lifts pit, inspection pit & sunken, overhead water tank, sunken portion of bathroom & toilet, balconies, chajjas, exposed roof before finished screed

### Features & Benefits

- Multipurpose & economical product, easy to use.
- Cracking - It prevents cracking by improving flexural strength
- Mortar modifier- Improved flexibility, no bleeding, lower water cement ratio & high resistance to water penetration
- Strongly binds to old & new concrete



**PKG.** | **Coverage / Kg:**  
20 Kg | 40-45 sq.ft.

## Super Flexibond - Flexible Waterproof Coating

Super FlexiBond is a single component pure acrylic water based compound. It is a white pigmented compound, designed to use as a liquid applied water proofing membrane for outdoor. The coating is UV stable & highly reflective with high flexibility.



### Area Of Application:

- Roof/chajjas
- As a damp-proof application under the first layer of bricks in masonry works.
- External Wall.
- It is also used as a paint coating for the exterior wall where we need excellent water barrier and repulsion properties.

### Features & Benefits

- Single component & easily brush applied
- Can be used on wet surface during rainy season
- UV stable, external application
- Water repulsion properties

**PKG.**  
20 Kg

**Coverage / Kg:**  
2 sqmt @ 200 micron DFT

## Rubberflex Black

### Black Membrane Waterproofing Coating

Rubberflex Black is a single component ready to use chemically modified styrene based cold applied liquid membrane. The product is dark bluish in colour which turns into a black membrane on drying. It has good resistance to plant roots.

### Area Of Application:

Rubberflex Black is typically used in basement, podium and terraces. It can also be used under tiles in wet rooms, such as bathrooms. The dry membrane is for interior use and should not be exposed to permanent daylight. It will function as a barrier to protect moisture sensitive surfaces (walls and floors).

### Features & Benefits

- It is a barrier to protect moisture on wall & floor
- Typically used in basement, podium & terraces
- Suitable substrates are all cementitious screeds and plasters
- Elongation upto 350%
- Crack bridging ability



**PKG.**

25Kg | 50Kg | 210Kg

**Coverage / Kg:**

15-18 sq.ft.





## Super Patch - Fast Setting Concrete

Super Patch is a cementitious pre-packed repair mortar with shrinkage compensation properties. It is supplied as single component powder which only needs mixing with a specific quantity of water to produce a non-shrink, free flowing, fast setting and high strength mortar.



### Area Of Application:

Super Patch will be of particular general patching work, filling voids, for repair of runways, industrial flooring.

### Features & Benefits

- Easy to apply
- Shrinkage compensated
- Medium to high build on prepared vertical surfaces
- Composition ensures excellent adhesion
- High adhesion
- Durable & Tough surface-Resistant to wear & tear

**PKG. 40 Kg HDPE Bag**

## Ever Plast O Bond

### Bonding Agent For Plaster & Concrete

Ever Plast-O-Bond is a modified polymeric solutions specially formulated to achieve a stronger bonding between smooth concrete surface & cement plaster or between old and new plaster. It eliminates the need of the hacking of concrete.

### Features & Benefits

- Build strong bond between plaster and concrete/ old and new plaster
- Reduces rebound loss
- Easily applicable by brush/spray
- Improves waterproofing upto a certain extent
- As the concrete cures, the bond strength increases

**PKG. 20 Kg**





A low-angle, upward-looking photograph of several large industrial structures, likely grain silos or storage tanks, constructed from corrugated metal. The structures are arranged in a way that they converge towards the top of the frame, creating a sense of height and scale. The sky is bright blue with scattered white clouds. In the center of the image, the words "INDUSTRIAL SOLUTIONS" are written in a bold, blue, sans-serif font. In the bottom right corner, a large industrial motor or pump is visible, partially cut off by the edge of the frame.

# **INDUSTRIAL SOLUTIONS**



# Structural Grout



## Everpower Grout 60

### Free Flow Non-Shrink Cementitious Grout

Everpower Grout 60 is a free flow non shrink high strength cement-based expansive grout. It is developed by using special additives & graded filler. It is recommended for grouting with design strength upto 60 MPa



#### Area Of Application:

Everpower Grout 60 is ideal for heavy machinery base plate, bearing plates, columns in precast, tie bolt holes, crack treatment, core filling. It is essential to withstand static & dynamic load.

#### Features & Benefits

- High early strength
- Non-shrink
- Chloride free
- Enhance durability
- Enhanced flow properties & pot life
- No bleeding & better mix consistency

PKG. 40 Kg HDPE bag

## Everpower Grout 80

### Free Flow Non-Shrink Cementitious Grout

Everpower Grout 80 is a free flow non shrink high strength cement-based expansive grout. It is developed by using special additives & graded filler. It is recommended for grouting with design strength up to 80 MPa.

#### Area Of Application:

Everpower Grout 80 is ideal for heavy machinery base plate, bearing plates, columns in precast, tie bolt holes, crack treatment, core filling & void filling. It is essential to withstand static & dynamic load.

#### Features & Benefits

- High early compressive, Tensile & Flexural strength
- Non-shrink
- Chloride free
- Enhance durability
- No bleeding & better mix consistency



PKG. 40 Kg HDPE bag

# Everpower Grout 80+

## High Precision, Free Flow Non-Shrink Cementitious Grout

Everpower Grout 80+ is a cement based ready to mix, high early strength, non shrink, pourable & flowable, high quality binder for precision grouting applications in engineering objects subjected to static and dynamic loads.



### Area Of Application:

To grout bearings, machine foundations, columns joints, slab joints in precast construction, tie bolt holes, crack treatment & core filling etc.

- To grout anchors in concrete
- To grout cavities, gaps and voids in concrete
- To grout base plate of turbine, compressor, boilers, pumps and heavy machinery
- Sealing around penetrations
- For fixing and anchoring the precast elements

**PKG.** 40 Kg HDPE bag

### Features & Benefits:

- Non shrink, non expandable grout
- Develops very high early and final strength
- Excellent bond strength
- Very good flow characteristics
- Consistent in quality
- Shrinkage compensated







# Flooring Solutions

## Strong Hardtop NM - Monolithic Floor Hardener

String Hardtop NM is quality controlled factory blended powders which are ready to use on site. It is specially made with special hard - wearing aggregates having high abrasion & wear resistance of suitable shape & size. It is applied as a dry shake over freshly floated concrete to provide a durable, non - slip monolithic floor.



### Area Of Application:

Recommended for flooring which is subjected to high abrasion due to the movement of steel wheels, heavy truck, fork lift & heavy movement of machineries.

### Features & Benefits

- High abrasion & impact resistance - long service life
- Non rusting - suitable for wet surface
- Dense surface - resist oil & grease penetration
- Monolithic bond with the base concrete
- Good slip resistance

### SKU

25 Kg bag

### Coverage

Varies 3-7kg/m<sup>2</sup> depending on type of floor

## Strong Hardtop M - Monolithic Floor Hardener

Strong Hardtop M is pre - mixed, dry shake surface hardner which is ready to use on site. It consist of specially selected & graded metallic aggregates, high strength cement & special additives to improve workability.

### Area Of Application:

Recommended for flooring which is subjected to high abrasion due to the movement of steel wheels, heavy truck, fork lift & heavy movement of machineries.

### Features & Benefits

- Ready to use, factory controlled, eliminates on site mixing
- Dense, non porous surface, hard wearing, abrasion resistant surface
- Resistant to penetration of oil, grease etc.
- Monolithic bond with the base concrete
- Non dusty & easy cleaning



### SKU

25 Kg bag

### Coverage

Varies 3-7kg/m<sup>2</sup> depending on type of floor

# Super Gypbond

## Bonding Agent For Gypsum Plaster

SUPER GYPBOND is a light green coloured liquid. Ready to use with high build bonding agent for adhering gypsum plaster and portland cement mixture on varied surface.



### Area Of Application:

Suitable for interior and exterior  
For RCC, AAC block & gypsum plaster  
New concrete, mortar, stucco plaster, dry wall, gypsum board etc.

PKG.

20 Kg

Coverage / Kg:

30-40 (Coverage may vary depending on the surface)

### Features & Benefits:

- Excellent bond with RCC, Concrete and other surface
- One coat application
- Green in color for easy identification
- Contains fine aggregate for better mechanical, as well as chemical adhesion
- It eliminates the need for hacking
- Gypsum plaster can be applied after 24 hours

## Some Of Our Valued Clients

 A KRISHNAKUMAR GOTAL ENTERPRISE	 PUNE METRO	 Shapoorji Pallonji	 Mahindra LIFESPACES		
 Since 1981....	 KOLTE • PATIL Creation, not Construction.	 ROHAN BUILDERS (INDIA) PVT. LTD.	 VTP REALTY A WORLD OF THOUGHTFULNESS	 ASHTEKAR CONSTRUCTIONS	
	 KALYANI	 DARODE-JOG PROPERTIES	 SAARRTHI Exceeding Excellence Real Estate   Redevelopment	 Kumar PROPERTIES	 PARANJAPE THE SPIRIT OF NEW INDIA





# EVERGREEN ENTERPRISES

## EVERGREEN ENTERPRISES

Co. Off: 587, Guruwar Peth, Kasture Chowk, Pune 411042  
Katraj Off: Plot No. 1, Jaldhara Society, Maulinagar, Katraj Kondhwa Road,  
Katraj, Pune 411046.

Email id: [info@evergreenhomes.in](mailto:info@evergreenhomes.in) / [severgreenenterprises999@gmail.com](mailto:severgreenenterprises999@gmail.com)

Web : [www.evergreenhomes.in](http://www.evergreenhomes.in)

+91 7768996699 | +91 7768993399